

FRIENDS OF THE INSTITUTE

APRIL 2014

FRIENDS LECTURE SERIES | THURSDAY, MARCH 13 | PILLSBURY AUDITORIUM, 11 A.M.



Elyse Karlin: “Jewelry of the First Ladies”

Sponsored by the Mary and Mark Fiterman Fund



Dolly Madison was raised as a jewelry-abstaining Quaker but loved finery, and as James Madison’s First Lady, donned low-cut dresses and bejeweled headdresses fashionable in Europe. Mamie Eisenhower created a modest trend in the

1950s with her charm bracelets. Jackie Kennedy wore discreet pearls when campaigning for Jack, but on glittery social occasions tucked a distinctive antique diamond starburst under the bust of an Empire dress. Nancy Reagan loved big gemstones. Michelle Obama mixes it up—echoing Jackie’s starburst brooch at the 2009 Democratic National Convention, but more often choosing chunky, multi-colored pearls or tiny pendants with words like ‘hope’ or ‘peace.’

How have the times, personal taste and family wealth shaped the jewelry that Martha Washington, Mary Todd Lincoln, Eleanor Roosevelt and Jackie Kennedy wore? Were these First Ladies lauded for their sense of style and verve, as is Michelle Obama, or excoriated as was Mary Todd Lincoln for dressing beautifully when Union soldiers were dying? Elyse Zorn Karlin brings her expertise as a journalist, jewelry historian and freelance curator to her April 10 Friends lecture on “Jewelry of the First Ladies.”

Karlin is the publisher and editor-in-chief of *Adornment, The Magazine of Jewelry and Related Arts*. She is past president of The American Society of Jewelry Historians and author of the definitive book on jewelry of the Arts and Crafts movement, *Jewelry and Metalwork in the Arts and Crafts Tradition*, as well as many other books. She has curated a number of exhibitions on jewelry history, including last year’s stunning *Out of this World! Jewelry in the Space Age*, at the Forbes Gallery in New York City. She is presently researching a book with Yvonne Markowitz, jewelry curator at the Museum of Fine Arts, Boston, about the jewelry of the First Ladies.

That research is far from straight-forward. Some First Ladies stayed well out of the public eye. To track a single piece of jewelry, Karlin might read several books, study photographs and paintings, cull through museum and private collections, and scour ledgers that reveal presidents’ personal spending. “When you study these women and what they wore, you learn about them and how they lived their lives,” Karlin has said. “The most exciting pieces are the ones we haven’t found yet.”

How have the times, personal taste and family wealth shaped the jewelry that Martha Washington, Mary Todd Lincoln, Eleanor Roosevelt and Jackie Kennedy wore?

New! Free Ticketing for Friends Lectures

Attendance at Friends lectures has been extraordinary! As a result, securing a seat in the Pillsbury Auditorium can be quite difficult. To help alleviate this, *free* tickets will be issued for seating in Pillsbury Auditorium, available at (612) 870-3000 or tickets@artsmia.org.

Space is limited for auditorium seating so call soon! Doors will open at 10:30 a.m. for ticket holders, who are requested to be seated by 10:50 a.m. (Overflow seating in Target Reception Hall does not require advance tickets.) Lectures begin at 11 a.m. as usual.

We encourage all to be patient with this change in policy. It is the intent of Friends to continue to provide free quality lectures, minimize pre-lecture hassles, and invite all to casually enjoy some conversation and treats before the featured speaker.

SAVE THE DATE
 FRIENDS LECTURES

THURSDAY, MAY 8

Kathleen Weil-Garris

Brandt

“Michaelangelo’s Genius:

Nature vs. Nurture”

Pop into the New AIB Pop-up Shop!

This year the all-new Art in Bloom Pop-up Shop boasts a team of remarkable professionals in the field of art and design. Our lead merchant is Molly Kinney, president of Department 56. The owners of Patina gift stores, Rick Haase and wife Christine Ward, will join Molly in purchasing and identifying consignment items.

Artist and Twin Cities designer, Lori Henson, is spearheading the "Call for Art" project which will be highlighted in the Pop-up Shop. Artists are asked to donate a 6" x 6" piece of original floral-inspired art. The donated art will be framed and sold to Art in Bloom shoppers. All pieces will be sold for \$30. Details at new.artsmia.org/art-in-bloom-2014/.

Committee co-chairs Cacky Wyatt Bell and Evonne Pedersen are coordinating the Shop team. Cacky shared a showroom in the Chicago Merchandize Mart and owned a multi-state interior design business. Evonne holds degrees in studio art and interior design. AIB is very fortunate to have them at the helm.

Silent Auction

Be tempted by treasures at the Patron Party Silent Auction. Where else could you find a week-long stay at a villa in picturesque Tuscany, a studio tour with beloved artists, Warren and Nancy MacKenzie, a fabulous Timothy Piotrowski photograph, a stay in Washington D. C. and behind-the-scenes Smithsonian tour with sorely-missed Joe Horse Capture, an inside look at the world of art restoration at the Midwest Art Conservation Center, and a two-hour class with renowned floral artist, Ardith Beveridge? All this and much more could be yours for the bidding!

Last Call for Volunteers

More volunteers are needed for Art in Bloom, Thursday morning, May 1, through Sunday, May 4. The majority of shifts are three hours, so let us know on which day you can share a bit of your time. Come to volunteer and stay to enjoy the beautiful floral arrangements and the timeless art with your friends. You won't want to miss being a part of this festive Friends event. Please contact JeanMarie Burtness jzb@burtness.com or Kathleen Steiger ksteiger@gmail.com.



Friends Support MIA's 100th Birthday

In January, President Pam Friedland presented a facsimile gift check for \$500,000 on behalf of the Friends to MIA President and Director, Kaywin Feldman. The Friends were the first to commit support for the MIA's 100th birthday celebration. Also pictured are Julianne Amendola, Director of Advancement, and Mary Mortenson, Senior Advancement Executive.

Dedications Opportunities

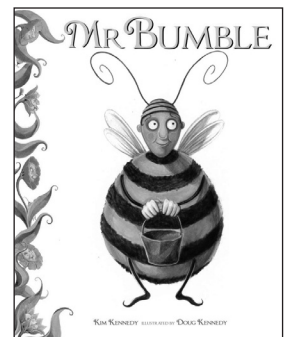
Honor a friend or loved one by dedicating an artwork of your choice in his or her name. Your \$50 donation is fully tax deductible and will help support a continuing MIA program, Creativity Academy, a multi-visit museum school program for fourth grade students now in its second year. This endeavor is sponsored by the Friends Children's Fund and involves two Saint Paul schools with no visual arts programs. Make your dedications individually or with a group of friends. Your dedication placard will appear on the pedestal. Visit our website: new.artsmia.org/art-in-bloom-2014/.

Special Group Offer

It's not too late to take advantage of a very special Art in Bloom offer. Gather a group of friends or club members together and purchase ten or more tickets to one or a combination of Art in Bloom lectures on May 1 and 2. In exchange, your group will receive a private, docent-led tour at the Minneapolis Institute of Arts, a \$125 value. This offer ends April 17, 2014. For more information, email us at aib2014groups@gmail.com.

Buzz through the Museum during Family Event

Don't miss Art in Bloom's free Family Event on Saturday, May 3, from 10:30 a.m.-1 p.m. This fun event is inspired by *Mr. Bumble*, Kim Kennedy's book that gives a clear message: work hard and be patient; victory will be sweet as honey.



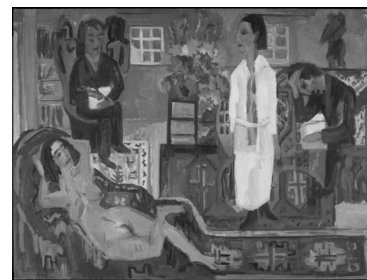
With so many activities for children ages three to eight, your special little person won't know where to start. Buzz through the museum's third floor on a scavenger hunt; get ready for spring by letting Bachman's expert staff show your child how to dissect a flower; create an amazing Queen Bee craft; learn about bees with the University of Minnesota Bee Squad and the Minnesota Landscape Arboretum; join in the chalk drawing outside next to Shawn McCann as he creates a 3D bee chalk drawing; and munch on a free snack. For more details, call (612) 870-3000 or visit new.artsmia.org/art-in-bloom-2014/.

Modern Bohemia

It would behoove us all to see *The Monuments Men* film, not just because it stars George Clooney, but because it portrays the greatest treasure hunt in history. More than 350 brave men, many of whom were academics, museum curators, and architects, arrived in Germany toward the end of WWII to find and secure literally millions of masterworks and historically significant buildings before they could be destroyed—and to forever put an end to Hitler’s dream of his own Fuhrermuseum. Although the film gives us only a hint of the magnitude of this fascinating WWII saga, the MIA holds a distinct connection to the story and the heroism of the men who lived it, through the eight pieces now residing in our own museum.

Of our eight pieces, one is particularly interesting in relation to the story. *Modern Bohemia*, (Gallery 371) painted by Ernst Ludwig Kirchner is a rare treasure in itself, as much of Kirchner’s art was destroyed prior to the war. In 1905, along with two other architecture students, Kirchner co-founded the artists group Die Brücke (The Bridge) aimed at eschewing traditional academic style and finding a new mode of artistic expression. True bohemians all, they became the first “expressionists” with study of the nude at the center of their art. *Modern Bohemia* is a depiction of Kirchner’s own lodgings in

Switzerland, and expresses his vision of the ideal creative environment. With Caucasian carpets, tribal art, nudity, all portrayed in a complex balance of form, pattern and color, the painting brings together all the elements that were the focus of these early expressionists. Kirchner’s use of vertical brushstrokes evokes a woven surface placing this painting in what is known as Kirchner’s “tapestry” period.



Ernst Ludwig Kirchner, 1880–1938, German, *Modern Bohemia*, 1924, oil on canvas, Bequest of Curt Valentin 55.3

As the Nazi party came to power in Germany, it became impossible for Kirchner to sell his paintings, as they were considered “degenerate art.” A total of 639 works by Kirchner were taken from museums and destroyed. He suffered from agonizing periods of mental illness, and on June 15, 1938, took his own life in front of his home in Frankenkirch, Switzerland.

Millions of treasures are still being uncovered and as quickly as their provenances can be determined, they will reside in the hands of their rightful owners. Perhaps, a Kirchner will be among them.

Lecture Day Tour for Friends Members

Friends members are invited to participate in a private docent-led tour offered before or after the April lecture. The topic, *Objects of Adornment*, is a head-to-toe tour of wearable art from ancient Egyptian gold jewelry to fashionable twenty-first century beaded shoes.

10 a.m. tour: Meet across from the security desk in the MIA’s Third Avenue lobby

1 p.m. tour: Meet in the Friends office on the first floor

Space is limited, so please reserve with new member liaison Toni DuFour (952) 994-8700 or tonidufour@comcast.net. Tours begin promptly, so please arrive early at the meeting place.

The tours are a special benefit for Friends members; we regret we cannot accommodate non-members on tours. Please invite your friends to join Friends of the Institute.

Friends-only Events

BOOK CLUB (APRIL 18): *Half-Finished Heaven: The Best Poems* by the Swedish poet, Tomas Tranströmer, winner of the 2011 Nobel prize for literature. Robert Bly, Minnesota poet and long-time friend of Tranströmer, has chosen and translated the best of Tranströmer’s poems to compile this book. Published by Graywolf Press in Saint Paul, the funding for the book was made possible in part by the Minnesota State Arts Board and several local foundations.

Friends Art & Architecture Tour, June 24

Mark your calendars now for Tuesday, June 24, the date of the Art and Architecture tour. We will travel by bus to Winona to visit the Minnesota Marine Art Museum.

“... a blockbuster collection of Monets, Cezannes and a Van Gogh. . .” *Minneapolis Star Tribune*, September 17, 2013

“...all of the works would be welcome additions to any art museum in the world ... especially rich in works of the Hudson River school and of the French Impressionists...” *The Magazine Antiques*, November/December 2013

We will explore the collection that has impressed curators and critics from around the world and will meet with Robert “Bob” Kierlin and his wife, Mary Burcher, the museum’s principal benefactors. We’ll also take in some of the impressive architectural sites in Winona and enjoy lunch together. Look for additional information in the May issue of the newsletter.

Meet at Studio 114 on Friday, April 18 at 10:30 a.m. for a docent-led tour of art related to the book. A discussion will follow the tour. RSVP: (612) 870-3045 or friends@artsmia.org. Space is limited, so please reserve promptly.

APRIL AT THE MIA

April floral arrangements at the Visitor & Member Services Desk are created by **Wisteria**. Please call the Friends office for more information about our florists.

NEW MEMBERS

Margaret Alldredge
Carolyn and Jay Beck
Joan Bedessem
Georgia Ehrreich
Kathy Fox
Mary Harvey
Lucy Hicks
Gretchen R. Holland
Edith A. Holmen
Carol Jordan
Linda Mack
Barbara McBurney
Christine A. Nelson
Patrine Shadick
Amy Silvermann
Charlotte Snook
Sarah E. Solbrig
Sue Stillman
Marcia Stout
Linnea Tweed
Terri Wentzka
Carole Wiederhorn

GIFTS TO THE FRIENDS

Children's Fund

In memory of Marge Dolan
From Carolyn Dahl

ON VIEW AT THE MIA

"Sacred Salons"
Saturdays, January–April 2014, 3 p.m.
Target Wing Atrium

"Matisse: Masterworks from The
Baltimore Museum of Art"
February 23, 2014–May 18, 2014
Target Gallery

"31 Years: Gifts from Martin Weinstein"
November 2, 2013–August 31, 2014
Harrison Photography Gallery

VOLUNTEERING

We update our volunteer database on a regular basis. If you are interested in volunteer opportunities, please email friends@artsmia.org with your name and, if you like, any specific areas in which you'd like to volunteer (e.g., special events, fund-raising, greeting visitors, etc.). Or, simply check the box on your membership renewal form indicating that you wish to be contacted. Questions? Call the Friends office: (612) 870-3045.

Friends President

Pamela Friedland

Newsletter Editors

Patty McCullough

Barbara Scott

Operations Coordinator

Faye Labatt

Friends Office

(612) 870-3045

Friends Fax

(612) 870-6315

Friends E-mail

Friends@artsmia.org

MIA Info

(612) 870-3000

Friends Web Site

www.artsmia.org/friends



Minneapolis Institute of Arts
2400 Third Avenue South
Minneapolis, MN 55404

INSIDE THIS ISSUE

Friends Lecture Series:
Elyse Karlin

Art & Architecture Tour
Preview

Art in Bloom Events